



Accessible Oxford Guide

A guide for disabled visitors to Oxford



CIVICA

www.civica.co.uk/housing

Transform the way you work with Civica



Visit: www.civica.co.uk Call: 01384 453400 Email: marketing@civica.co.uk

International reach Local knowledge

World-class sporting and leisure facilities require a value-driven integrated approach. As one of the delivery partners on London 2012 Olympic and Paralympic Games, Mace thrives in the delivery of significant sporting venues and creating a lasting legacy for local regeneration.

Mace can assemble a highly skilled team to manage a project through funding and financing; strategic planning; design and procurement; construction and logistics; and operations and maintenance. From delivering new sustainable facilities such as Corby Swimming Pool as part of a wider regeneration development, to international stadia in the Middle East, Mace understands the challenges of creating first-class projects on time and on budget, in a way that resonates with its surrounding area and end user.

Mace is proud to be Oxford City Council's lead consultant and project manager on the Oxford competition standard pool project in Blackbird Leys.

For further information please contact:

Simon Dale

Director

t +44 (0)121 212 6148

e simon.dale@macegroup.com



London 2012 Olympic and Paralympic Games

What sets us apart from other law firms is that we offer London expertise at regional rates and that we are committed to delivering success for our clients in the most practical and cost effective way.

Our commercial, business-focused advice includes:

- employment law
- corporate and commercial
- commercial property including landlord and tenant
- tax planning advice specifically for small businesses
- dispute resolution

Our specialist advice for private individuals includes:

- wills, trusts and probate
- clinical negligence and personal injury
- residential and agricultural property
- family law
- resolving disputes

Why you should contact us:

“Reliable, friendly and efficient.”

“Very thorough and pragmatic.”

“Great ability to explain legal positions clearly.”

Chambers and Partners, A Client's Guide to the UK Legal Profession, 2013 edition



Henmans
Freeth
LLP





***New all-age playground
created at Florence Park,
Oxford, by S&C Slatter***



Specialist design & construction of high quality, child-safe playgrounds for interactive learning and development.

At S&C Slatter our aim is to provide premium artificial surface materials and structures, which create safer and inclusive environments that positively enhance children's play and learning experiences. Our specialist advisors will ensure that you maximise on available space and budgets, and minimize maintenance implications.

**For more information visit:
www.sandcslatter.com
or call: **01635 34521****



Together We Can Make a Difference

As commercial and residential property advisers, Jones Lang LaSalle is delighted to be supporting **Oxford City Council** in making the city's spaces accessible to all as well as bringing more affordable homes to Oxford.

[joneslanglasalle.co.uk](https://www.joneslanglasalle.co.uk)



JONES LANG
LASALLE®

Real value in a changing world

Accessible Oxford Guide

A guide for disabled visitors to Oxford

Published by: Burrows Communications Limited

Head Office: Publicity House, 106 Stafford Road,
Wallington, Surrey SM6 9AY

Tel: 020 8773 3000 • Fax: 020 8773 8888

Email: postmaster@burrows.co.uk

Web: www.burrows.co.uk

Our Advertisers:

We gratefully acknowledge the support of all the firms whose advertisements appear in these pages. Without their help we would not be able to produce this guide. As a reciprocal gesture we have pleasure in drawing the attention of our readers to their announcements, but wish to make it clear that Oxford City Council can accept no responsibility for their products or services advertised.

Cover illustration by Louise Gordon

www.cargocollective.com/louisegordon



**Your personal independence
support specialist**

Mobility - Daily Living - Sport Support - Foot Care



332 Abingdon Road • Oxford • OX1 4TQ •
info@abilitymatters.co.uk • www.abilitymatters.co.uk

To find out more visit us today.
Alternatively, call us on 01865 242 500.

ability matters®
supporting your active life



**Solving complex IT problems,
beautifully**

Proud providers of
Corporate Web
Services for

**Oxford City
Council**



OXIL

**01865 784294
www.oxil.co.uk**

3030339

3030616



Blanchford

BUILDING SUPPLIES

**YOUR LOCAL
INDEPENDENT
BUILDERS' MERCHANT**

We Welcome the Trade & Retail

OXFORD

59 Windmill Road
Headington
Oxford
OX3 7BS

TEL:

01865 - 759200

WALLINGFORD

Beadle Trading Estate
Hithercroft Road
Wallingford
Oxfordshire OX10 9EZ

TEL:

01491 - 833545

PRINCES RISBOROUGH

14 Picts Lane
Princes Risborough
Buckinghamshire
HP27 9DZ

TEL:

01844 - 347976

3030222



Contents

Maps and Tourist Information	9
Transport	12
Motability, Petrol Stations	12
Transport Direct and Taxi Services	12
Dial-A-Ride	13
Petrol Stations	14
Bus and Train Services	16
Parking and Park & Ride	17
Public Toilets	19
Shopmobility	20
Shops	21
Hotels and Accommodation	22
Dining	25
Leisure and Sports Facilities	29
Oxford University - Colleges	33
Museums and Libraries	36
Other Tourist Attractions and Gardens	38
Entertainment, Theatre and Cinemas	39
Art Galleries	40
Places of Worship	41
Banks/Building Societies/Bureaux de Change	43
Oxford on the Level - a self-guided tour	45
Open Spaces and Countryside	51
Useful National Contacts	52
Useful Local Addresses	53

HTC OXFORD

- DAF Trucks Service Centre
- Seven Bay Workshop
- Trailer Servicing
- DAF Aid Breakdown & Recovery assistance
- DAF Check (Electronic PMI exchange)
- Fiat Professional Main Dealer Service Centre
- Fiat Motor Home Service Centre
- All Makes Van & Truck servicing
- Tachograph Centre
- MOT Testing Class 4 & 7
- HGV Brake Roller test
- Courtesy Vans (Subject to availability at time of booking)

Opening hours

Mon- Thurs 07.30 to 22.00, Friday 07.30 -21.00 &
Sat 08.00 -12.30

- DAF Parts Dealer
- TRP All Makes Truck parts
- Next day VOR delivery on DAF parts ordered by 18.00pm previous day
- Multipart All Makes Van parts
- Fiat Professional Parts Main Dealer
- LDV Convoy & Maxus Parts available
- Ad Blue stockist
- Twice daily AM & PM van delivery serving Oxfordshire & High Wycombe Area

Opening hours

Mon- Fri 08.00 to 18.00 &
Sat 08.00 -12.00



HTC OXFORD FIAT Oxfordshire dealer for **FIAT PROFESSIONAL AWARD WINNING RANGE**

- 3 years 120,000 miles Manufacturers' Warranty
- Finance options available subject to status
- New & Used Vehicles Sales

Check out our award winning range today



- Euro 5 models available throughout 2013, beat Euro 6 price increase
- Euro 6 available from March 2013, full model range roll out to follow
- Finance Options available
- Repair and Maintenance packages available
- DGS Truck Hire
- New & Used Trucks Sales

16 Chancerygate Business Centre, Langford Lane, Kidlington, Oxon OX5 1FQ
Tel: 01865 844100 www.htcvancentre.co.uk



Based upon the Ordnance Survey mapping with the permission of The Controller of Her Majesty's Stationery Office © Crown Copyright 43382U. This map is subject to Copyright and is protected by digital fingerprint. Copying or reproduction in part or in full is prohibited without the prior written consent of Burrows Communications Ltd. All rights reserved Burrows Communications 2013.





Street Map of Centre

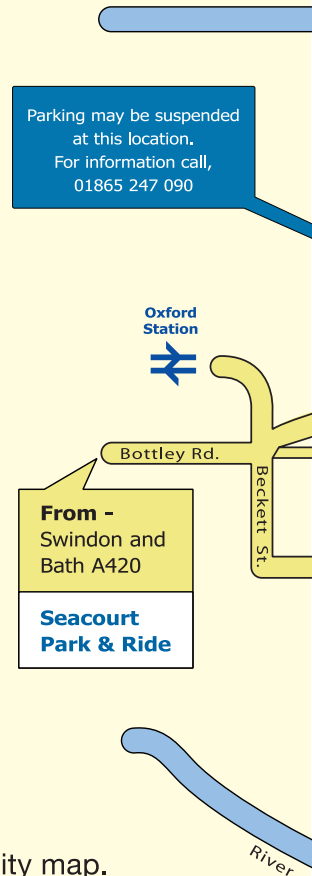
Key to map symbols

	Central area entry / exit point
	Central Area
	No entry, apart from Blue Badge holders before 10am and after 6pm
	Location, and number of blue badge spaces
	Accessible Toilet locations

- For Blue Badge Parking information, please see page 18.
- Please look out for street signs informing you of 'Loading Bay' parking restrictions.

This map is intended as a guide and should be used in conjunction with a detailed city map.

Based upon the Ordnance Survey mapping with the permission of The Controller of Her Majesty's Stationery Office © Crown Copyright 43382U. This map is subject to Copyright and is protected by digital fingerprint. Copying or reproduction in part or in full is prohibited without the prior written consent of Burrows Communications Ltd. All rights reserved Burrows Communications 2013.





From -
Woodstock, Stratford A44
Witney, Chelmsford A40

Pear Tree Park & Ride

From -
Bicester A34
Northampton A34 / M40 / A43
Banbury A4260

Water Eaton Park & Ride

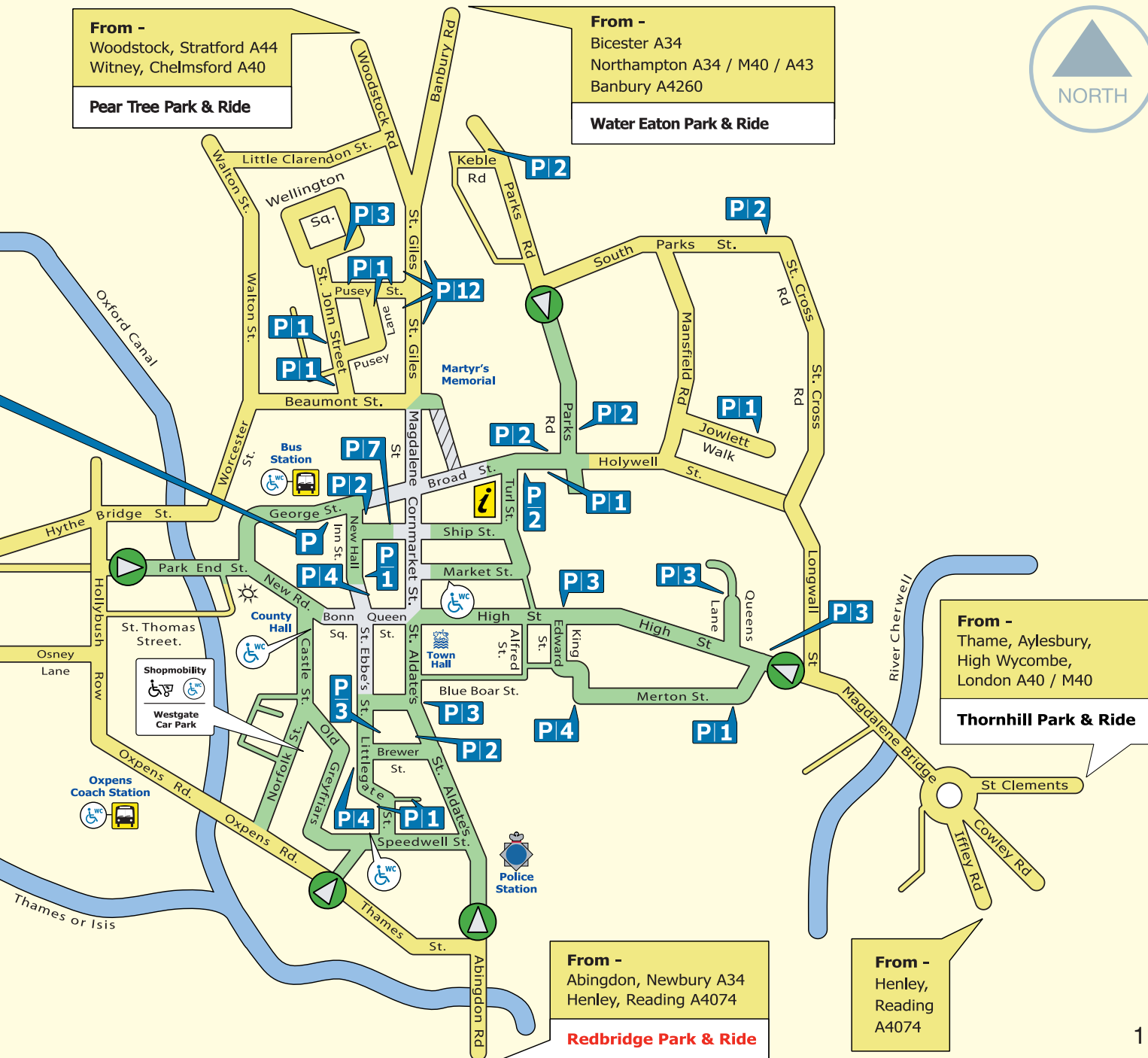
From -
Thame, Aylesbury,
High Wycombe,
London A40 / M40

Thornhill Park & Ride

From -
Abingdon, Newbury A34
Henley, Reading A4074

Redbridge Park & Ride

From -
Henley,
Reading
A4074





Transport – National

Motability

Scheme to provide for the purchase or lease of vehicles to people on mobility allowance.

Tel: 0845 456 4566

Minicom: 0845 6750009

Disabled Motoring UK

This is the campaigning charity for disabled motorists, passengers and Blue Badge holders.

Tel: 01598 489449

www.disabledmotoring.org

email: info@disabledmotoring.org



Petrol Filling Stations

Local stations are lists on pages 14 & 15.

Both AA and RAC publish guides for disabled drivers, which contain useful and important information as well as accommodation guide for travellers. These are free to members.

Transport Direct

Where you can plan a journey door-to-door.

www.transportdirect.info

Taxi Services

Wheelchair accessible taxis are available from:

001 Taxis:	01865 240000
Radio Taxis:	01865 242424
A1	01865 248000

Oxfordshire Dial-a-ride

Dial-a-ride is a local minibus service for people who are unable to use ordinary buses and do not have any private transport. You may go anywhere in these areas: Blackbird Leys, Cowley, Iffley, Jordan Hill, Marston, City Centre, Sandhills or Wolvercote. You may also take a carer/escort.



The service is not available for Hospital appointments or day care as these are carried out by the Ambulance Service and Social Services.

Before you can use Oxfordshire Dial-a-Ride you must register to become a member of the scheme. Annual membership costs £5 and there is a flat fee per journey. Travel is free for concessionary pass holders but the annual membership fee still applies.

Dial-a-ride operates on different days in each local authority area so it is best to check availability by ringing 0845 310 1111 or visit the website: www.oxfordshire.gov.uk

Online travel information

www.disabledtravelguide.co.uk

www.nationalrail.co.uk

www.traveline.info

0871 2000 2233 (10p a minute).

Petrol Filling Stations in the Oxford area

The petrol stations indicated below generally ask you to sound your horn, flash your lights or hold up your Blue Badge, whichever is appropriate.

An assistant will then fill your car for you.

Address	Location aid
Oxpens Service Station Oxpens Road, Oxford OX1 1RX Tel: 01865 721397	In centre of Oxford on route to the main car park from either Botley Road A420 or Abingdon Road A4144. 24hr
BP Express Woodstock Road, Oxford OX2 8AA Tel: 01865 318020	On A4144 Woodstock Road, leading into Oxford from Wolvercote roundabout, A40. 24hr
Total 44-48 Garsington Road, Cowley, Oxford OX4 2LG Tel: 01865 399 952	On B480 off the A4142 Eastern by-pass.
Q8 Oxford Road, Cowley, Oxford OX4 2EN Tel: 01865 715506	On route into Oxford from the Eastern by-pass (A4142) on the left hand side of the road (B480). 24hr
Hartwell Ford BP Seacourt Tower, Botley, Oxford OX2 0JP Tel: 01865 791798	Following A420 (Botley Road) out of Oxford, on the retail park at Seacourt Tower, just before A420 turns right into ring road. Mon-Fri 7am-9pm, Sat 8am-9pm & Sun 10am-5pm

Address	Location aid
Murco Between Towns Road, Cowley, Oxford OX4 3LZ Tel: 01865 714377	On (B4495) opposite Templar Square Shopping Centre, Cowley. 6am - 11pm. Staff available at times during the day to assist but you would be advised to ring first.
Shell Headington 52 London Road, Headington, Oxford OX3 7RD Tel: 01865 765437	On the A420 leading into the area of Headington. 24hr
Sainsbury's Filling Station Heyford Hill, Oxford OX4 4XR Tel: 01865 771146	On roundabout between A4074 (Southern by-pass road) and A4142 (Eastern by-pass road) in the Superstore. Mon-Fri 6am-midnight, Sat 6am-10pm & Sun 7am-10pm
Tesco Filling Station Oxford Retail Park Ambassador Avenue Oxford OX4 6XJ Tel: 01865 441445	On retail park off A4142 (Eastern by-pass road) Pay at Pump available 24hrs. Mon 6am-midnight, Tues-Fri 24hrs, Sat 6am-11pm & Sun 10am-4pm

Bus Services - City and Local

The County Council operates a Concessionary Fares scheme which gives benefits for buses for residents with less ability and disabilities.

Leaflets and application forms are available from Oxford City Council, St Aldate s Chambers, 109 St Aldate's, Oxford OX1 1DS, Tel 01865 252646.

Permit for Travel for mobility scooters

All users of mobility scooters must obtain prior approval of operators and obtain a standard 'permit for travel' prior to travelling on a bus with their scooter. This can be obtained from Stagecoach Oxfordshire and can be used on all the local buses.

Tel: 01865 772250

email:

oxford.enquiries@stagecoachbus.com

Several bus companies operate in and around Oxford. Most have low-floor access.

The Oxford Bus Company

01865 785400

www.oxfordbus.co.uk

All of the City and Park & Ride buses have low floor easy access.

Stagecoach

Tel: 01865 772250

www.stagecoach-oxford.co.uk

All buses have low floor easy access.
London - Oxford Buses

Oxford Airline

Tel: 01865 785400

www.oxfordbus.co.uk

Wheelchair accessible coaches normally used.

Oxford Tube

Tel: 01865 772200

www.stagecoach-oxford.co.uk

Can make arrangements for wheelchair access given sufficient advanced notice.

National Express

08705 808080

www.GoByCoach.com

City Tour Buses

Guide Friday

01865 790522

Gloucester Green

www.citysightseeingoxford.com

No wheelchair access, but assistance given up steps. Audio tapes available. Concessions available.

Car Access to Bus Station

Cars are not normally allowed into the bus station, so you need to make arrangements in advance if you wish to be dropped off or collected.

Tel 01865 794307.

Please try to give 24 hours' notice.

Railway Station

The Railway Station is fully accessible, has accessible WC and lifts.

Buses stop immediately outside, most of which are accessible. Taxi rank immediately outside. All approached via gentle ramps.

Passengers with disabilities should pre-arrange their journey to ensure that the necessary support is available to them.

Details are set out in a leaflet 'Rail Travel for Disabled Passengers' which contains an application form for the Disabled Persons' Railcard.

For deaf and hearing impaired travellers a National Rail Enquiries minicom service is based in Reading on 0845 6050600.

www.nationalrail.com

Park & Ride

All Park & Ride buses have the wheelchair accessible 'kneeling step' with fold-down ramp.

Parking

On-Street Parking – Blue Badge Parking Bays

There are 90 Disabled Parking Bays throughout the city. A Blue Badge must be displayed showing its number.

For further information telephone
Oxfordshire Social Services on
0845 0507 666.

On-Street Pay & Display Parking Bays

Blue Badge holders are able to park for unlimited periods in on-street Pay and Display (without charge) and residents' parking spaces. Parking is usually permitted for up to 3 hours on single or double yellow lines, but some restrictions do apply (i.e. loading areas, etc.) Please refer to guidance issued with the Badge for details of restrictions.

The largest concentration of the Pay and Display spaces can be found in Broad Street and St Giles.

Blue Badge Parking

The map on page 9 shows the locations of parking for around 90 Blue Badge vehicles. Blue Badge holders will continue to be able to park for unlimited periods in on-street Pay and Display and residents' parking spaces and for up to 3 hours on yellow lines.

Refer to the Blue Badge Scheme booklet for information on parking restrictions in loading bays.

Oxford Information Centre

15/16 Broad Street, Oxford OX1 2DA
Tel: 01865 252200
Fax: 01865 240261
Email: tic@oxford.gov.uk
Website: www.visitoxfordshire.org

Open:

Monday – Saturdays: 9.30am – 5pm
Sundays & Bank Holidays in summer:
10am – 3pm

Bus Users Oxfordshire

Tel: 01865 554814

An independent organisation set up to give bus passengers a voice.
www.bususers.org

Railfuture

An independent organisation campaigning for better services for passengers.

www.railfuture.org.uk



Public Toilets

All accessible toilets are accessed by RADAR key. RADAR keys can be bought or loaned from the Oxford Information Centre.

City Centre Toilets

Market Street	Men	Women	Disabled	Baby Change	9 - 5 + overnight cubicle
Westgate Car Park	Men	Women	Disabled	Baby Change	9 - 5 + overnight cubicle
Gloucester Green	Men	Women	Disabled	Baby Change	9 - 5 + overnight cubicle
Oxpens	Men	Women		Baby Change	9 - 5
Speedwell Street	Men	Women	Disabled	Baby Change	9 - 5
Town Hall	Men	Women	Disabled	Baby Change	Available when TH is open

Suburban Toilets

Cowley Road	Men	Women	Disabled		9 - 5
St Clements	Men	Women	Disabled	Baby Change	9 - 5
Littlemore	Men	Women			9 - 5
Bury Knowle	Men	Women	Disabled	Baby Change	9 - 5
Diamond Place	Men	Women	Disabled	Baby Change	9 - 5
Wolvercote	Men	Women			9 - 5
South Parade		Women	Disabled		9 - 5
Knights Road	Men	Women			9 - 5

A Changing Place toilet is available at the Shopmobility Unit in the Westgate Car Park – available during the hours the Shopmobility/Car Park Office is open.

A Community Toilet Scheme is in operation in Oxford City. Businesses involved in the scheme show a logo on the door stating that they are part of the Community Toilet scheme and no purchase is necessary.



Shopmobility

City Centre Shopmobility

Oxpens Car Park

Oxpens Road

Oxford, OX1 1SA

Telephone: 01865 252489

Open Monday to Friday

8am – 6pm

Saturday & Sunday

9.30am – 5pm

A free service offering loan of wheelchairs and electric scooters to people who need them for shopping and sightseeing in the City centre. Please bring identification on your first visit. Please book in advance if possible as equipment is limited. Free parking (25 spaces) for users of the scheme.

Cowley Shopmobility

Hockmore Street Car Park,

Templar Square, Cowley

Tel: 01865 748864

Open all trading hours.

A free service offering loan of wheelchairs and electric scooters to users within the Centre. Plans to extend the service in the future. Please bring identification for your first visit. Advance booking may be necessary as equipment is limited.

Witney Shopmobility

Langdale Gate, Witney, Oxon

01993 864787

A free service offering loan of wheelchairs and electric scooters to users within the centre of Witney. Please book in advance as equipment is limited and please bring identification for your first visit.



Shops

Shopping Districts:

City Centre: Westgate • Clarendon Centre • Covered Market • Gloucester Green:
General Market on Wednesdays, Antiques & Second-hand on Thursdays
Jericho • Headington • Templars Square, Cowley • Summertown

There are too many shops to list, so only the larger shops in the City Centre with wide-ranging facilities are listed here. Most shops in the City Centre have accessible entrances.

	Auto Doors or Open Front	Disabled WC	Disabled Changing Rooms	Accessible Restaurant or Café	Uncluttered Floor Areas	Accessible Lift
Debenhams	✓	✓	✓	✓	✓	✓
BHS	✓	✓	✓	✓	✓	✓
Boots	✓	✗	✗	✗	✓	✓
M&S	✓	✓	✓	✓	✓	✓
Boswells	✓	✗	✗	✗	✓	✓
Primark	✓	✗	✓	✗	✓	✓



Hotels and Accommodation

Oxford Information Centre can provide a booklet listings Hotels, Guest Houses, Inns and B & Bs for Oxford and the surrounding areas. Very few have disabled facilities.

Those listed below advertise good access:

	Telephone Number	Disabled Parking on Site	Rating (English Tourism Council)	Accessible Entrance	Accessible Bedroom/ Bathroom
Hawkwell House Hotel Iffley Village, Oxford OX4 4DZ	01865 749988	✓	***	✓	Lift ✓
Travelodge Peartree Roundabout, Woodstock Road, Oxford OX2 8JX	01865 558445	✓	Branded	✓	3 x wet rooms
Travelodge London Road, Wheatley, Oxford OX33 1JH	01865 875705	✓	Branded	✓	✓

	Telephone Number	Disabled Parking on Site	Rating (English Tourism Council)	Accessible Entrance	Accessible Bedroom/ Bathroom
Thames Four Pillars Hotel Henley Road, Sandford on Thames, Oxford OX4 4GX	01865 334444	✘	****	✓	✓
Travel Inn Cowley Business Park, Garsington Road, Oxford OX4 2JZ	01865 779230	✓	Branded	✓	✓
The Linton Lodge Hotel (Best Western), Linton Road, Oxford OX2 6UJ	01865 553461	✓	****	✓	Accessible Toilet ✓
The Randolph Beaumont Street, Oxford OX1 2LN	Loop System 0870 400 8200	✓ with charge	****	Portable Ramp	Lift Acc. Toilet ✘
Welcome Break Service Area, M40 Junction 8a, Oxford OX33 1JN	01865 877000	✓	***	✓	✓

	Telephone Number	Disabled Parking on Site	Rating (English Tourism Council)	Accessible Entrance	Accessible Bedroom/ Bathroom
Westwood Country Hotel Hinksey Hill Top, Oxford OX1 5BG	01865 735408	✓	**	✓	✗
Barcelo Oxford Hotel Godstow Road Oxford OX2 8AL	01865 489988	✓	****	✓	✓
Holiday Inn Peartree Roundabout Woodstock Road Oxford OX2 8JD	0871 942 9086	✗	***	✓	7 rooms listed as accessible
Green Gables 326 Abingdon Road, Oxford OX1 4TE	01865 725870	✓	◆◆◆	✓	✓



Dining

There are too many to list, but below is a selection of restaurants, cafés and pubs with fairly good facilities:

	Accessible Entrance	Disabled WC	Accessible Tables	Accessible Self Service or Waitress Service	Large Print Menus
Museum of Modern Art Pembroke Street	lift	✓	✓	✓	✗
The Mitre (Beefeater) High Street	level	✗	✓	✓	Braille
All Bar One High Street	gentle ramp	✓	✓	✓	✓
O'Neils George Street	ramp	✓	✓	✓	✓
Fire & Stone George Street	✓	✓	✓	✓	✗
ASK George Street	gentle ramp	✓	✓	✓	✗

	Accessible Entrance	Disabled WC	Accessible Tables	Accessible Self Service or Waitress Service	Large Print Menus
Debenhams George Street	lift	✓	✓	✓	✗
Bella Italia George Street	gentle ramp	✓	✓	✓	Braille
Jamie's George Street	ramp	✓	✓	✓	magnifier available ✓
Gino's Gloucester Green	level	✓	✓	✓	✗
Noodle Nation Gloucester	level	✓	✓	✓	✗
Brasserie Gerard George Street	gentle ramp	✓	✓	✓	✗
Four Candles George Street	level in side street	✓	✓	✓	✗
Zizzi George Street	accessed by side door	✓	✓	✓	✗

	Accessible Entrance	Disabled WC	Accessible Tables	Accessible Self Service or Waitress Service	Large Print Menus
Pizza Hut George Street	ramp	✓	✓	✓	plus Braille ✓
Que Pasa New Road	gentle ramp	✓	✓	✓	✗
Brown's Woodstock Road Jericho	level	✓	✓	✓	✗
Town Hall Café St Aldate's	✓	✓	✓	✓	✗
Living Room Castle Complex New Road	✓	✓	✓	✓	✗
Prezzo Castle Complex New Road	✓	✓	✓	✓	✗
Malmaison Castle Complex New Road	✓	✓	✓	✓	✗

	Accessible Entrance	Disabled WC	Accessible Tables	Accessible Self Service or Waitress Service	Large Print Menus
Krispy Kreme Castle Complex New Road	✓	✗	outside mainly	✓	✗
Pizza Express Castle Complex New Road	✓	✓	✓	✓	✓
La Tasca Castle Complex New Road	✓	✓	✓	✓	✗
The Real Oriental Buffet Castle Complex New Road	✓	✓	✓	✓	buffet
Swan & Castle Castle Street	✓	✓	✓	✓	✗
1st Floor Restaurant 158 Cowley Road	✓ Lift	✓	✓	✓	✗



Leisure and Sports Facilities

Further details are available on the web: www.oxford.gov.uk
(then click on Leisure)

Barton Leisure Centre

Waynflete Road, Barton,
Oxford, OX3 8GA
Tel: 0844 893 3222

25m pool, gym, fitness classes
and activity room hire. Wheelchair
access throughout.

Ferry Sports Centre

Diamond Place, Summertown,
Oxford OX2 7DP
Tel: 0844 893 3222

Swimming pool, gym, exercise classes,
children's playschemes, squash,
badminton, 5-a-side football,
volleyball, sports hall. Wheelchair
access to most areas. Disabled
changing facilities with adult changing
bed and hoist. Pool hoist.

Blackbird Leys Leisure Centre

Pegasus Road, Blackbird Leys,
Oxford OX4 6JL
Tel: 0844 893 3222

Indoor sports hall, snooker room,
gym, fitness room, outdoor courts,
bar facilities and entertainments,
children's activities, crèche and
playgroup, café.

OXSRAD

Disabled Sports and Leisure Facilities
Recreation Centre
Court Place Farm, Marsh Lane,
Marston, Oxford OX3 0NQ
Tel: 01865 741336
www.oxsrad.org.uk

Fully accessible sports and leisure
centre for badminton, table tennis,
darts, snooker, weight training.
also a bar and jacuzzi. Other recreation
activities available, i.e. art, singing,
bingo.



Temple Cowley Pools

Temple Road,
Cowley,
Oxford
OX4 2EZ
Tel: 0844 893 3222

Swimming pool, diving pool.

Note: Not accessible for wheelchairs: solarium, sauna, steam room, activity rooms and weight training.

Hinksey Outdoor Pools

(May to Sept)
Abingdon Road,
Oxford
OX1 4RP
Tel: 0844 893 3222

Access also via Lake Street. Large outdoor heated swimming pool with relaxation area and outdoor play area in Hinksey Park. Wheelchair access to all areas. Disabled WC and changing facility. Disabled access to water via sloping pool.

Oxford Ice Rink

Oxpens Road,
Oxford OX1 1RX
Tel: 0844 893 3222
Ice rink, broomball, public viewing area, coffee bar. Fully accessible with Disabled WC. Adult sledge available, wheelchairs can go on the ice.

Horspath Athletics Sports Ground

Oxford City Athletics Club,
Oxford Road, Oxford
Tel: 01865 395363 enquiries
765706 track

The facilities are designed to meet the needs of disabled athletes. Accessible changing facilities and chair anchorage for field events are provided.

Boating

Independent wheelchair access not possible. Staff are happy to assist with access over steps and into boats if prior arrangements are made.

Magdalen Bridge:

C Howard & Son

Tel: 01865 761586

Punts for hire. Contact for access arrangements prior to visit.

Folly Bridge:

Salter Brothers Ltd

Tel: 01865 243421

Passenger steamers.

Wheelchair spaces available.

Canoeing

Falcon Canoeing Club

Disabled People's Canoe Group

Donnington Bridge,

Oxford

OX4 4BJ

www.falconrcc.co.uk

Blackbird Leys Swimming Pool

Blackbird Leys,

Oxford OX4 6HW

Tel: 0844 893 3222

Swimming pool, canoeing, lifesaving. Ramp then level through to poolside. No disabled changing rooms or WC.

Greyhound Racing & Speedway Racing

Oxford Stadium

Sandy Lane,

Cowley,

Oxford OX4 6LJ

Tel: 0870 840 8903

www.lovethe dogs.co.uk

email: oxford@lovethe dogs.co.uk

Fully accessible trackside and grandstand, restaurant, disabled WC, bar, tote-betting facilities for placing bets and tote runners from restaurant tables.

Go-Karting also at Oxford Stadium but with restricted access times to the grandstand. Telephone 01865 717134 for information.

Snooker

Blackbird Leys Leisure Centre

Pegasus Road, Blackbird Leys,
Oxford OX4 6JL

Tel: 01865 467020

Two full-sized tables. Fully accessible
with disabled WC. Café and Bar.

Ozone Leisure Park

Grenoble Road,
Oxford OX4 4XP

Kassam Stadium - 01865 761503

Induction loop in South Stand.

108 home wheelchair spaces,

24 away spaces

Bowlplex - 01865 714100

Level access throughout

Public Internet.

Vue Cinema

Tel: 08712 240 240

Accessible to wheelchairs, induction
loop, Infra Red system, subtitled and
audio described available – ring
number for more details.



Oxford University – Colleges

	MAIN ENTRANCE	Alternative Level Entrance	QUADS	HALL	CHAPEL
ALL SOULS 01865 279379	Ramp available over 2 steps		Level	Not open to public	Ramp available over 3 steps
BALLIOL 01865 277777	Virtually level		Platform to 1st Quad	Accessible	Ramp available over 3 steps
BRASENOSE 01865 277830	Level		Ramp available over 1 step	Ramp available over 4 steps	Ramp available over 2 steps
CHRIST CHURCH 01865 276150	Level inaccessible	Ramped across	Level some ramped	Lift to Hall; Picture Gallery	Cathedral ramped
CORPUS CHRISTI 01865 276700	Ramp available over 4 steps	Planned	Access ramp over 1 step	Not open to public	Ramp available over 1 step
EXETER 01865 279600	Level		Level	Not open to public	5 steps
GREEN TEMPLETON 01865 274770	Level		Level	Observatory: ramp available	
HERTFORD 01865 279400	Permanent ramp over 1 step		Level	Not open to public	Ramp
JESUS 01865 279700	1 step	Ship Street	Level to 1st Quad, 4 + 4 steps to 2nd Quad	4 steps	2 steps
KEBLE 01865 272727	Level		Level	Not open to public	Available over 2+3 steps

LADY MARGARET HALL 01865 274300	Ramp	Fyfield Road, access to river and gardens	Via Fyfield Road Side entrance to Quads-4steps	Ramp	Level - in Deneke Bldg
LINCOLN 01865 279800	Level	Grove Quad 5 steps	Virtually	Level	Level into vestibule
MAGDALEN 01865 276000	Level through main gate	Auditorium through Longwall	Level	20 steps	Level
MANCHESTER 01865 271006	4 steps	Arlosh Gate at side	Level	Not open to public	Ramp available over 3 steps
MANSFIELD 01865 270999	Level		Level	Not open to public	Level
MERTON 01865 276310	Ramp available over 2 steps		Level	Not open to public	Ramp available
NEW 01865 279555	Level		Level	20 steps	Ramp available over 2 steps
NUFFIELD 01865 278500	Level		6 steps between quads	Not open to public	2nd floor by appointment only
ORIEL 01865 276555	Level	Off Oriel Street	Level to 1st	Many steps	2 steps
PEMBROKE 01865 276444	Level		Quad, 2nd Quad has alt entrance	Access via lift	Level from 2nd Quad
THE QUEEN'S 01865 279120	7 steep steps with handrail	Library Gate Tel 279120	Level Acc Toilet Available	Level	Virtually level Ramp available
ST ANNE'S 01865 274800	Level	Level off Banbury Road	Level	Virtually level	No chapel
ST ANTONY'S 01865 284700	Several steps	Side entrance in Woodstock Rd	Level from side entrance	Not open to public	No chapel

ST CATHERINE'S 01865 271700	Level		Level to all Quads and Orn. Gardens	Level	No chapel
ST EDMUND HALL 01865 279000	Level		Level	Not open to public	Not open to public
ST HILDA'S 01865 276884	Level		Level to gardens	Not open to public	Not open to public
ST HUGH'S 01865 274900	2 steps to Porter Lodge Entrance level	Mary Gray Allen wing level	Yes	Level	Inaccessible
ST JOHN'S 01865 277300	1 step	5 other level entrances	Level to Quads and gardens	Not open to public	Level
ST PETER'S 01865 278900	2 steps	Through iron gate by Chapel	Level to 3 Quads	Not open to public	Level path from gate to West door
SOMERVILLE 01865 270600	Level		Level	Not open to public	Accessible
TRINITY 01865 279900	Level	Acc. WC Level	Level	Level	
UNIVERSITY 01865 276602	4 steep steps	Via Logic Lane	Virtually level	Lift	Level Ramp on request
WADHAM 01865 277900	Level		1st Quad level. Ramps to gardens	Not open to public	Over steps and step to Antichapel
WOLFSON 01865 277900	Level (cobbled)	Level side and rear entrance	Level	Lift	No chapel
WORCESTER 01865 278300	Level to edge of Quad	Side gate to gardens	Via side gate only	Ramp over 3 steps	Ramp over 3 steps



Museums and Libraries

	Tel No and Website	
Ashmolean Museum Beaumont Street	01865 278000 www.ashmol.ox.ac.uk	All areas accessible. Shop, Café and Disabled facilities.
Bate Collection of Historical Instruments Faculty of Music, St Aldate's	01865 286261 www.ashmol.ox.ac.uk	Ramp to front entrance. No wheelchair access to small part of museum upstairs.
Bodleian Library Broad Street	01865 277224	Entrance and Quad level from Cattle Street, doors opened by prior request. One step to foyer plus one step into Divinity School. Rest of library not open to public. New visitor centre planned.
Christ Church Picture Gallery	01865 276172	No wheelchair access into museum - 8 steps. Disabled WC.
Oriel Square Museum of the History of Science Broad Street	01865 277280 www.mhs.ox.ac.uk	New areas, lift to whole of basement and Disabled WC accessible by lift.
Modern Art Oxford Pembroke Street	01865 722733 www.modernartoxford.org.uk	Fully accessible with lift and Disabled WC.

	Tel No and Website	
Museum of Oxford St Aldate's	01865 252761	Access to museum in Main Reception of Town Hall with accessible entrance at the top of St Aldate's.
Pitt Rivers Museum	01865 270927	Fully accessible. The entrance is through the Oxford University Museum at the far end of the groundfloor. Access Information Booklet available from the website. Audioguide available from the information point.
The Oxford University Museum of Natural History Parks Road	01865 272950 www.ashmol.ox.ac.uk/oum	Fully accessible. Blue badge parking available on request. Disabled WC.
Central Library Westgate	01865 815509	Auto-doors, fully accessible, lift to all floors. Induction loop, large-print section, Braille service to order. Disabled WC.



Other Tourist Attractions and Gardens

Walking Tours

The walking tours can be tailored to be wheelchair accessible, given approx. 2 hours notice.

Contact Oxford Information Centre.

Telephone: 01865 252200

www.visitoxford.org

Official Walking Tours:

Mainly on the flat.

Tour approximately 2 hours.

- Official University and City Tour
- Inspector Morse Tour
- Christ Church University Tour
- Ghost Tour
- Pottering in Harry's footsteps
- Alice Tour
- Many others – see website or ring for information.

Botanic Garden

Rose Lane, Oxford

Tel: 01865 286690

Level gravel paths, accessible entrance from Rose Lane. Disabled WC (RADAR key).

Hinksey Park

Abingdon Road, Oxford

Tel: 01865 252240 (Parks Office)

Level gravel paths, accessible entrance from Abingdon Road with car park and from Lake Street. Lake, children's playground, large gardens, refreshment kiosks, tennis courts.

Oxford Covered Market

off Cornmarket or High Street.

Level access throughout. With exclusive shops and restaurants this indoor shopping centre is fast becoming one of the most sought out destinations for shoppers looking for a refreshingly relaxed retail experience. The square offers small arts and crafts outlets ideal for the visitor looking for a unique gift to take home. Accessible toilets near Market Street entrance.



Entertainment, Theatre and Cinemas

Theatres

New Theatre

George Street, Oxford OX1 2AG
Tel: 01865 320770
for access information
Tel: 0844 847 1585 for Box Office
www.ticketmaster.co.uk

Platform lift into stalls. Three wheelchair spaces at back of Stalls in rows X, Y and Z. Accessible WC at front of stalls. An induction loop system is available in the front Circle.

Oxford Playhouse

11-12 Beaumont Street,
Oxford OX1 2LW
Tel: 01865 305305
www.oxfordplayhouse.com

Level access to the theatre foyer, bar and Box Office as well as to the auditorium. Low level counters at the

Box Office and Foyer Bar. Low level telephone available in the Box Office. Sennheiser infra-red hearing system can be used in both the Circle and rows D to R in the Stalls - receiver from the Box Office available free of charge and may be reserved in advance. Occasional performances take place with British Sign Language Interpretation. Access leaflet available at Box Office for comprehensive details.

Cinemas

Odeon Cinema

Magdalen Street,
Oxford OX1 3AE
Tel: 0871 224 4007

Level entrance, disabled WC, accessible counters and refreshments area. Wheelchair spaces in Screen 1, and infra-red in all screens (hire, buy or bring your own).

Odeon Cinema

George Street,
Oxford OX1 2BL
Tel: 0871 224 4007

Level entrance, disabled WC. Screens 4 and 5 are wheelchair accessible and are fitted with Audio description and subtitling facilities. Infra-red in all screens (hire, buy or bring your own).

Vue Cinema

Ozone Leisure Park,
Grenoble Road, Oxford OX4 4XP
Tel: 08712 240 240

Level access throughout. Lifts. Wheelchair spaces and sound enhancement in all screens. Subtitles and audio described available.

Art Galleries

Modern Art Oxford

30 Pembroke Street,
Oxford OX1 1BP
Tel: 01865 722733
www.modernartoxford.org.uk

Fully accessible, passenger lifts to upper floors, platform lift to lower floor, Café Moma and disabled WC. Open Tues – Sat 10.00am (closing times variable). Sunday 12.00pm-5.00pm.





Places of Worship

	Accessible Entrance	Disabled WC	Induction Loop	Large Print
Roman Catholic St Aloysius Gonzaga (The Oratory) Woodstock Road, Oxford Tel: 01865 315800	Ramp	✓	✓	
Methodist Wesley Memorial Church New Inn Hall Street, Oxford Tel: 01865 243216	Ramp to auto doors	✓	✓	Prayer and hymn
Baptist New Road Bonn Square, Oxford Tel: 01865 798235	Level, then lift	✓	✓	Hymn book & service sheet
Anglican University Church of St Mary the Virgin High Street, Oxford Tel: 01865 279111	Level, then lift			
St Ebbe's Pennyfarthing Place, Oxford Tel: 01865 240438	Level via North door	✓	✓	Service sheets & readings

St Giles Woodstock Road Tel: 01865 311198	Level	✓	✓	Service books
St Aldate's Church St Aldate's, Oxford Tel: 01865 254800 Note: Parish Centre (Pembroke Street) has portable ramp	Level	✓	✓	Large screen
Society of Friends (Quakers) Friends Meeting House 43 St Giles, Oxford Tel: 01865 557373	Ramp	✓	✓	✗
Jewish Jewish Synagogue 21 Richmond Road Jericho, Oxford Tel: 01865 514356	Ramp to auto doors	✓	✗	✗
Muslim Bangladeshi Mosque 57 Cowley Road, Oxford Tel 01865 793118	Level	✗	✗	✗
Christian Scientists Christian Scientists 36a St Giles, Oxford OX1 3LD Tel: 01865 557605	Level	✓	✓	Christian Science Quarterly on request



Banks, Building Societies, Bureaux de Change

	Accessible Entrance	Text Phone	ATM at Accessible Height	Low Cashier Desks	Induction Loop	Large Print and Braille Leaflets available
Lloyds TSB Carfax	Auto doors	✗	✓	✓	✓	✓
HSBC Cornmarket	Auto doors with ramp	✓	✓	✗	✓	✓ and audio
Santander Queen Street	Auto doors	✗	✗	✓	✓	✓
Barclays Cornmarket	Auto doors	✗	✓	✓	✓	✓
Nat West Cornmarket	Level	✗	✓	✓	✓	✓
Santander George Street	Auto doors Level	✓	✓	✓	✓	✓ and audio
Cheltenham & Glos George Street	Auto doors	✓	✗	✓	✓	Audio statements offered

	Accessible Entrance	Text phone	ATM at accessible height	Low Cashier Desks	Induction Loop	Large Print and Braille Leaflets available
Chelsea Building Society George Street	Portable Ramp & Bell	✗	✗	✓	Portable	✓
Co-op Bank Bonn Square	Auto doors	✗	✗	✓	✓	✓
Halifax Westgate	Auto doors	✗	✓	✓	✓	✓
Nationwide Queen Street	Auto doors	✗	✓	✓	✓	✓
Post Office St Aldate's	Push door & ramp	✓	✗	✓	✓	✓
Coventry Building Society	Auto doors	✗	✓	✓	✓	✓



Oxford on the Level

A self-guided tour

The tour starts at Carfax, the ancient heart of the City, where the four roads from the north, south, east and west gates meet. The name is derived from the Latin *quadrifugus* (four-forked). Dominating the scene is Carfax Tower, all that remains of the now demolished St Martin's Church. You will notice the impressive clock and quarter boys (the 16th century originals are in the Museum of Oxford, in the Town Hall on St Aldate's).

Cross the road at the lights to the woollen shop at the top of St Aldate's and proceed down St Aldate's, past the Town Hall, its door surmounted by the City's coat of arms. Cross Blue Boar Street and continue down to the main entrance of Christ Church. People in wheelchairs are permitted to enter the college here, passing under

Tom Tower, designed by Sir Christopher Wren in 1681. This houses a seven ton bell called Great Tom which strikes 101 times, once for each of the original members of the college, at 9.05 pm. This is nine o'clock Oxford time, the City being five minutes west of Greenwich!

Take a turn around Tom Quad, the largest quadrangle in Oxford, at the centre of which is a pond, originally created partly as a reservoir for the college. The present statue of Mercury replaces an earlier one, damaged in 1817.

Christ Church is Oxford's grandest and largest historic college. Originally founded by Cardinal Wolsey in 1525, it was taken over by King Henry VIII who in 1546 created Christ Church, uniquely combining a college with the Cathedral of Oxford. Within the

Cathedral (only accessible to accompanied wheelchair users) is the reconstructed Shrine of St Frideswide, the patron saint of Oxford. During the Civil War (1640s), Oxford was the King's headquarters and Charles I and his court lived in Christ Church, while his wife, Henrietta Maria, with her court or household lived in the nearby Merton College.

Leave the College by the way you came in and turn right, and right again into Blue Boar Street, across Bear Lane, as far as Oriel Square. The car barrier can be passed on the right hand side. Bear right and continue through Oriel Square until you meet Merton Street. Take the pavement in Merton Street (if bikes allow passage).

As you pass Corpus Christi College on your right, look through the doorway to the 16th century sun-dial surmounted by a pelican, which features both the arms of the college and those of its founder, Richard Foxe, Bishop of Winchester. Continue along Merton

Street on the pavement, as there is an area of cobbles coming up.

If you want to take a look go into the covered entrance area to Merton College on your right. You are permitted to go as far as the ramp and look across to the hall and quadrangle of one of Oxford's oldest colleges, founded around 1274 by Walter de Merton. His statue (a copy), holding his Bishop's crozier and the great seal of his Chancellor's office, together with that of a king (Henry III), surmounts the gateway. Cross the road to see the stone panel which shows the founder kneeling in the wilderness before the book of seven seals from the Revelation of Saint John. Undergraduates of this college of particular academic standing are termed "postmasters", a unique use of the word.

As you go out of the college, cross the cobbles to the other pavement (you will see a section of lower pavement to your right as you cross). Go left as far

as Magpie Lane. Turn right up Magpie Lane as far as the High Street. Before crossing the High Street at the lights, look across the road on the right to The Queen's College, (some way down the road) named after Queen Philippa, wife of Edward III. The cupola over the entrance gate, designed by Hawksmoor, covers a statue of Queen Caroline, wife of George II, who gave money for rebuilding the college.

Cross the High Street to enter the University Church of Saint Mary the Virgin via the Baroque south porch. Look up at the statue of the Virgin and Child whose heads were shot off by a parliamentary soldier in 1642 and restored 20 years later. If you are unable to open the door, please bang loudly and someone should come and help you!

From medieval times the Church was closely associated with the origins of the university and was used for meetings, examinations and ceremonies. It was also a place of

safekeeping for the university's funds which were stored in iron chests. Hence the term "University Chest" meaning the university members and administrators dealing with university finances.

The trials of the three Bishops, Cranmer, Latimer and Ridley (1554, 1555 and 1556) were conducted in this Church. They were burned at the stake in Broad Street for their beliefs. A pillar opposite the pulpit was damaged by the erection of a platform for the final trial and sentencing of Cranmer; a small arrow marks the spot.

During the Civil War many people were buried beneath the church floor when the City, loyal to the King, was besieged in 1644 and 1646. John Wesley, founder of the Methodist Church, preached the University Sermon on seven occasions here. John Henry Newman, leader of the Oxford Movement was vicar of St Mary's from 1828-43.

Leave the church by the same way and go to your right, into St Mary's Passage, a few yards up the High Street (under the overhanging tree) into Radcliffe Square. From here you have a fine view of the magnificent twin towers of All Souls College, built to a design by Nicholas Hawksmoor in 1716 and 1720, together with the splendid sundial designed by Sir Christopher Wren. Founded as a graduate college for a warden and forty fellows in 1437, its members were required not only to pursue higher studies but also to pray for the souls of the departed, particularly King Henry V, King of England and France and soldiers of the House of Lancaster who fell in the French wars. During the Civil War All Souls College donated over 250 lb of plate to the Royalist cause.

Facing you is perhaps Oxford's most photographed building, the Radcliffe Camera. Believed to be the first round library in Britain, it was completed in 1748 and became a science library. Now part of the Bodleian Library, it is



connected by underground passage to the New Bodleian and the main Bodleian libraries. This enables books from the 80-odd miles of shelving, much of it also underground - to be conveyed safely to readers at their desks above.

Turn left into Brasenose College which takes its name from the bronze sanctuary knocker attached to the main gate of the medieval Brasenose Hall. At that time colleges, like

churches, enjoyed special privileges, and a fugitive from the law who entered the gates was free from molestation. A replica knocker is placed above the door. The original, taken to Stamford in the 1330s and only retrieved in 1890, now hangs above high table in the college dining hall.

Leave Brasenose College and turn left along the pavement. You may wish to take a closer look at the Bodleian Library (a path leads off slightly to the right, between the cobbles). Alternatively, turn left down Brasenose Lane (note the medieval-style gutter) cross Turl Street and carry straight on to Market Street. There are public toilets (including a disabled toilet - RADAR key access only) on your left. The Information Centre in Broad Street holds RADAR keys for sale or loan.

Enter the Covered Market (laid out in 1774) which was intended to house the street markets formerly in Fish Street (St Aldate's) and Butcher Row (Queen Street). The market is open 7 days a

week (Monday - Saturday 9 – 5.30, Sunday 10 - 4) and offers a variety of wares from fish to saddles, from vegetables to children's clothes and from jumpers to students' trunks.

The market traders and university have for centuries had a close, if stormy, relationship, the one supplying the needs of the other. The price, quality and measures of food and drink sold were matters of almost continuous dispute.

As you explore the market, look up to admire the fine 19th century roof timbers. Follow the passage next to the Oxford Cobbler and enter the Golden Cross yard.

The Golden Cross yard is an interesting example of recent renovation and restoration. In 1986-7 its ancient properties were returned to their former appearance, a task undertaken in close co-operation with the City Council's Conservation Officer. The existing 16th, 17th and 19th century buildings enclose a courtyard

formed in the Middle Ages for the Cross Inn. An inn may have existed on this site as early as 1193 when Mauger the Vintner is recorded. During the 16th century the inn was used by travelling companies of players and it is said that Shakespeare stayed there on occasion. The first floor of the Pizza Express (behind you) occupies the former bedroom accommodation of the inn and contains the major fragments of two painted rooms, the Crown Chamber (c1570) and the Prince's Chamber (c1595).

Unfortunately these rooms are not accessible by wheelchair. However, the ground floor of the Pizza Express with its fine new conservatory is accessible to wheelchairs (disabled toilet available) if you would like to sample a pizza or afternoon tea.

Leaving the Golden Cross yard you arrive at thronging Cornmarket Street. Turn left down Cornmarket and you return to Carfax, the heart of this unique City.

We hope that you have enjoyed your tour of Oxford. People using wheelchairs are welcome to join any of the walking tours, which leave the Information Centre daily. These tours are conducted by the Oxford Guild of Blue Badge Guides and offer a two-hour introduction to the City and colleges.

If you do not have sufficient time to take the whole of this tour, then an afternoon visit to St John's College (after 1pm), with its level access garden, splendid historic architecture and attractive new buildings, could make a pleasant alternative. St John's is located on St Giles (go North from Carfax, up Cornmarket Street, keep straight on until you come to St Giles). it is probably easier to take the right hand pavement, going North, then turn right at Broad Street and cross the road almost immediately, into Magdalen Street East. St John's is a little further up on the right. The entrance for wheelchairs is near to the Lamb and Flag Pub.



Open Spaces and Countryside

Short Accessible Walks

Easy walks under 1.5 miles are designed to be suitable for push chairs and wheelchairs. The downloadable walk information is colourful, friendly and easy to use, providing a simple map of the walk and easy to follow directions. The downloads also include information about path surfaces, widths and gradients for those in wheelchairs.

www.oxfordshire.gov.uk/cms/content/short-easy-walks-oxford

Oxford Canal

Wheelchair access at Aristotle Lane and Rewley Road (near Railway Station). Very steep ramp/stepped approach from Walton Well Road.

Nature Reserves

These countryside areas have gates and the ground may be uneven - but they are generally accessible for wheelchairs.

University Parks

Parks Road, Oxford

Port Meadow

Walton Well Road, Oxford

Boundary Brook Nature Park

Boundary Brook Road,
(off Iffley Road), Oxford

Shotover Country Park

Old Road, Headington, Oxford

Magdalen College Deer Park

High Street, Oxford

Christchurch Meadows

St Aldate's, Oxford
(wheelchair access via service road,
through large double gates)



Useful National Contact Numbers

Motor Neurone Disease Association
Tel: 01604 250505
Email: enquiries@mndassociation.org
www.mndassociation.org

National Autistic Society
Tel: 020 7833 2299
www.autism.org.uk

National Society for Epilepsy
Tel: 01494 601300
www.epilepsysociety.org.uk

**Disability Rights UK
(formerly RADAR)**
Tel: 020 7250 3222
Email: enquiries@disabilityrightsuk.org
www.disabilityrightsuk.org

**Action on Hearing Loss
(formerly RNID)**
Tel: 0808 808 0123
Email:
informationline@hearingloss.org.uk
www.actiononhearingloss.org.uk

Royal National Institute for the Blind
Tel: 0303 123 9999
Email: helpline@rnib.org.uk
www.rnib.org.uk

Spinal Injuries Association
Tel: 0845 6786633
Email: sia@spinal.co.uk
www.spinal.co.uk

Free Information Lines:

Age UK	0844 887 0005
Alzheimer's	0300 222 1122
Arthritis Care	0808 800 4050
Autism	0808 800 4104
Benefits Enquiry Line	0800 882 200
Disability Benefits Helpline	

0845 7123 456

Gas emergency	0800 111 999
---------------	--------------

NHS Direct	0845 4647
------------	-----------

RNIB	0303 123 9999
------	---------------

Action Hearing Loss	0808 808 123
---------------------	--------------

Scope	0808 8003 333
-------	---------------

Type Talk	18002 then the required number
-----------	-----------------------------------

Useful Local Addresses

Police Station

St Aldate's, Oxford

For non emergency contact ring 101

Fully accessible with Disabled WC.

From Carfax go down St Aldate's on the left hand side past the Town Hall. Continue along and the police station is just before Folly Bridge.

John Radcliffe Hospital

Headley Way, Headington,
Oxford OX3 9DU

Tel: 01865 741166

Oxford City Council

Town Hall, St Aldate's,
Oxford OX1 1BX

Tel: 01865 249811

www.oxford.gov.uk

From Carfax, go down St Aldate's on the left hand side. The Town Hall is 200 yards down the road. The accessible entrance is 50 yards down St Aldate's from Carfax. Lift and accessible toilets are available.

Oxfordshire County Council

County Hall,

New Road,

Oxford

OX1 1ND

Tel: 01865 792422

www.oxfordshire.gov.uk

Oxford County Court

St Aldate's (on junction with
Speedwell Street),

Oxford OX1 1TL

Tel: 01865 264200

Disability Law Service

Tel: 020 7791 9800

Email: advice@dls.org.uk

www.dls.org.uk

Providing legal advice to the public on disability issues.

Post Office

St Aldate's,

Oxford OX1 12Y

Tel: 0845 202 863

Minicom 0845 7223355

Ramped access.

Oxford Chinese Community and Advice Centre

44b Princes Street,
Oxford
OX4 1DD
Tel: 01865 204188

Asian Cultural Centre

Manzil Way, Cowley Road,
Oxford OX4 1GH
Tel: 01865 425000

Oxford Association for the Blind

Bradbury Lodge,
Gordon Woodward Way,
Oxford OX1 4XL
Tel: 01865 725595
Email: admin@oxeyes.org.uk
www.oxeyes.org.uk

Centre for Deaf and Hard of Hearing

Littlegate Street,
St Ebbe's,
Oxford OX1 1RL
Tel: 01865 243447
Email: info@deafdirect.org.uk

Oxfordshire Epilepsy Support Group

75 Marston Ferry Road,
Marston,
Oxford
OX3 OEU
Tel: 01865 435458

Wheelchair Suppliers and Repair Service

G Keep (Wheelchair Repairs) Ltd

Unit 6, Driftway Centre,
Pony Road,
Oxford
OX4 2RD
Tel: 01865 747960

Ability Matters

332 Abingdon Road,
Oxford OX1 4TQ
Tel: 01865 242500

Equipment Supplies

Look up in the Yellow Pages:

- Mobility & access equipment/ vehicles
- Charitable & voluntary organisations

Guidepost Trust

Independent Living Centre,
Northfield Farm Lane,
Witney,
Oxon
OX28 1UD

Tel: 01993 899958

Email: ilc@guidepoststrust.org.uk

The provision of direct services to a wide range of users including children and young people with special needs; people with learning disabilities; people with or recovering from mental health problems; older people with Alzheimer's and other forms of dementia; and carers.

The main objective is to help our users to live as independently as possible, be an integral part of their community, socialise, make friends, have access to community facilities and resources, develop skills, access training, gain employment, achieve healthy and safe lifestyles and have a better quality of life.

Oxfordshire Unlimited

Oxfordshire Unlimited is a local user-led disability organisation for physically disabled people.

Their aim is to improve access to goods, services and facilities within Oxfordshire for physically disabled people.

Anyone can become a member.

Tel: 0845 121 4112

www.oxfordshireunlimited.org



UKAS Accredited Asbestos Consultancy



With many years' experience as asbestos consultants to the commercial, industrial and residential sectors, CWE provides a wealth of expertise and offers cost-effective solutions for all asbestos-related matters including:

Asbestos Surveying (Management and Refurbishment/Demolition Surveys)

Four stage clearances and airborne fibre monitoring

Asbestos re-inspections

Asbestos management, consultancy and site risk assessment

Management of asbestos removal contracts

Asbestos training

We tailor our services to suit your business needs, from a retail unit to a complete property portfolio. For further information on how asbestos could impact your business contact us at:

CWE Services Limited The Barn, Oak Farm, Weston Road,
Congresbury, BS49 5EB

Tel: 01934 838025 **Fax:** 01934 838027 enquiries@cwegroup.co.uk

3030305



At Amity we specialise in performing asbestos removal throughout the United Kingdom. With over 28 years experience providing the most expert advice and the highest on-site standards, it is our promise to deliver unbeatable value for money and set the highest standards for excellence in our industry.

Our services include:



Please Call Us On: 0800 877 8310

Windrush House, Lynch Hill, Stanton Harcourt OX29 5BB

3030237



Builders' Merchants

Helping Oxford maintain & improve its infrastructure

Oxford's traditional heavyside Builders' Merchant

Kingston Business Park, Kingston Bagpuize,
Oxon OX13 5AS

Tel: 01865 820090 **Fax:** 01865 821864
merkkosales@merkko.co.uk

3030221



Halls Catering



A well established company, providing excellent quality fast food trailers serving hot and cold food.

Halls Catering offer a wide range of outside catering services including: **Ice Cream Vans**

• **Fast Food Trailers** • **Mobile Catering**

These are ideal for any outdoor events including:

• **College Balls** • **Shows** • **Fetes** • **Fun Events**
• **Car Boot Sales** • **Pop Concerts**



38 Kestrel Crescent, Oxford OX4 6DY

Telephone: 07771 823607

Emai: hall17@btinternet.com

3030661



**FIRE DETECTION
EMERGENCY LIGHTING
SECURITY SYSTEMS
ACCESS CONTROL - CCTV
EXTINGUISHANT SYSTEMS
FIRE EXTINGUISHERS
EQUIPMENT SUPPLY –
SYSTEM INSTALLATION
24 HOUR EMERGENCY CALLOUT
MAINTENANCE & REPAIR**

TEL: 01865 390190 FAX: 01865 390088

Web: www.pyrotec-systems.co.uk

e-mail: mail@pyrotec-systems.co.uk

PYROTEC SERVICES LIMITED

The Olde Forge, Main Road, Fyfield, Abingdon,
Oxon, OX13 5LN

3030236



Frenco Service Replacement Ltd.

***Distributors of
Car & Commercial Vehicle
Components***

Tel: **01865 772161**

Fax: **01865 747346**

NUFFIELD INDUSTRIAL ESTATE, LITTLEMORE, OXFORD OX4 6JS

3030248



CDM CO-ORDINATORS

"Co-ordinating health & safety aspects of your construction project's design & planning phase, preparing the Pre-Construction information and the Health and Safety File."

Over 12 Years of Experience:

Specialising in CDM Co-ordination and planning supervision.

Members of Association for Project Safety (Registered), CHAS & Constructionline.

Worked on over 2,000 projects from £30,000 to £80 Million.

A Team of CDM co-ordinators & Support staff totally focused on co-ordinating health & safety aspects of construction projects.

Clients include Local Authorities, Housing Associations, Government Bodies, Commercial/Industrial, Leisure, Residential, MOD, Healthcare, Education, Historical.



Tel: **0845 226 4466** | Email: info@aga-ltd.co.uk
www.aga-ltd.co.uk

3030410



BANDVULC
— GROUP —



**Not only does
our environment
benefit, so does
your business**

**BANDVULC
TYRES PRODUCE
SPECIALIST TRUCK
RETREADS THAT
ENSURE MAXIMUM
EFFICIENCY AT
MINIMUM COST**

**INNOVATION
THROUGH
TECHNOLOGY**

Gillard Way, Lee Mill Industrial Estate,
Ivybridge, Devon, PL21 9LN
T : +44 (0) 1752 893559
E : sales@bandvulc.co.uk
www.bandvulc.com

3030521



GSR Contractors Ltd

Well Established & Accredited Building & Decorating Contractor.

Complete Building Works Including:

- Disabled Adaptions
- Roofing
- Painting & Decorating
- Refurbs
- Extensions / Alterations
- Plastering
- Plumbing / Electrical
- Groundwork

22 Dynham Place Headington Oxford OX3 7NL

gary.richmond@hotmail.co.uk

Tel/Fax: 01865 765462

www.gsrcontractors.com

3030223



DECORATING & BUILDING

**WORKING WITH
OXFORD CITY HOMES**

Unit 5, Ashville Way, Cowley, Oxford OX4 6TU

T: 01865 749977 or 020 8964 5466

www.dwcontractors.co.uk

3030238

JONES & REEVES
PAINTING CONTRACTOR
MAJOR PAINT WORK

We are pleased to be
associated with
Oxford City Council.

Unit 8, 42 Downside Road
Headington, Oxford OX3 8HR
T: 01865 767776 F: 01865 767706

3030239

UNIVERSAL TRUCK & TRAILER PARTS LTD

**SUPPLIER OF ALL MAJOR
COMMERCIAL VEHICLE PARTS**

TEL: **01865 882788** FAX: **01865 880471**

EMAIL: **sales@uttp.co.uk**

EYNHAM ROAD, CASSINGTON, WITNEY, OXON OX29 4DB

3030265



www.paragonmanagement.co.uk



Simply delivering.... fit out & refurbishment

Paragon Management UK Ltd. | 23 Austin Friars, London EC2N 2QP | T: 020 3008 7625

3030567

OCVC Access Centre



The Oxford Access Centre (at OCVC) has provided a friendly and supportive service for many years. The Centre offers a quality Needs Assessment as part of the disabled students' allowance, (DSA), application process.

Oxford Access Centre has opened outreach facilities at:

- OCVC Banbury Campus (Broughton Road)
- Swindon College (North Star Avenue)
- Reading College (Kings Road)

With the added choice of location to have an assessment, it is now even easier for students to reach their full potential while studying.

To book a Needs Assessment at any of our assessment locations:

Tel: 01865 551811

Email: oxfordaccesscentre@ocvc.ac.uk

Website: www.ocvc.ac.uk/oxford-access-centre



Kings Road, Reading,
RG1 4HJ



North Star Avenue,
Swindon, SN2 1DY



Expens Road, Oxford, OX1 1SA
Broughton Road, Banbury, OX16 9QA

3030446

Oxfordshire's Early Intervention Hubs



Oxfordshire Early Intervention Services – Services for children, young people and their families.

- Children Centres
- Early Intervention Hubs
- Open Access Groups and Targeted Groups for young people
- Outreach Support to families
- Parenting Groups
- Specialist Substance Misuse Worker (Young Addaction)
- NEET support and groups
- Career and training advice for returning to work
- Common Assessment Framework/Team Around the Child advice and support
- Behaviour support and attendance at school



Please contact East Oxford Early Intervention Hub 01865 328490
Littlemore Early Intervention Hub on 01865 816202 to find out more.



3030344

YOUR LOCAL Motability DEALER FOR SCOOTERS AND POWERCHAIRS



Visit us in Aylesbury to try out our extensive range of scooters and powerchairs, or one of our mobility specialists can come to visit you.

Call us FREE on 0800 220975
to arrange an appointment.



Gerald Simonds Healthcare Ltd.

9 March Place, Gatehouse Way, Aylesbury, Bucks. HP19 8UA **Freephone:** 0800 220975 www.gerald-simonds.co.uk

3030392



Garage Equipment Ltd

3 Hollyleigh Avenue, Filton, Bristol BS34 7QU

**Sales, Service and Installation of all types of workshop
equipment including:**

- Compressed air and Lubrication pipe work installations
 - Exhaust Extraction installations
 - Scheduled equipment calibration
 - Contract maintenance



Tel: 01179 755542 • Mob: 07774 675200
email: imperialge@aol.com

3030523

COULD A DIFFERENT PERSPECTIVE TRANSFORM YOUR BUSINESS?

We'll show you how a
fresh perspective on
your property strategy
can really benefit your
business.

So you're in good
shape whichever way
you look at it.

www.cbre.eu

CBRE



ELECTRICAL DISTRIBUTORS



Eyre & Elliston Ltd are a leading independent Electrical Wholesaler based in Chesterfield, Derbyshire. We operate from 59 branches covering from Brighton and Christchurch in the South, up to Carlisle and across to Morpeth in the North.

We have over 75 years experience in supplying products including electrical accessories, installation and distribution equipment, lamps & lighting, cables, ventilation and water heating products to a broad spectrum of customers throughout the UK, and have a long standing reputation of sourcing hard to find items.

We offer many value added services to our clients including energy surveys, lighting design, battery and lamp recycling. In addition we are pleased to assist our customers in identifying cost saving initiatives including consolidated invoicing, purchase card transactions, consignment stock management and EDI invoicing.



Contact Us

County Trading Estate
Watlington Road
Cowley, Oxford
OX4 6LS

01865 777181
www.eyreandelliston.co.uk
oxford@eegroup.co.uk

3030500

Oxford City Leisure Centres Accessible facilities for everyone



4 indoor pools • 1 heated outdoor pool • 4 gyms
Exercise classes • 2 sports halls • Ice rink

Receiving benefits? Then you may be eligible for a Bonus Card. The Bonus Card offers great savings on leisure activities. Call or visit your local centre for details.

Download our access guide from www.oxfordgov.uk/leisure

0844 8933 222†

†BT calls charged max 3 pence per minute, other providers may vary.



Fusion Lifestyle is a registered not for profit organisation working in partnership with Oxford City Council to manage your local leisure facilities

3030420



- HMO Experts
- Outstanding reputation
- Unbeatable Landlord Services
- A large number of applicants ready and waiting for available properties
- Offering over 70 years of local knowledge



www.premier.uk.com

01865 792 299

01865 261 898

welisten@premier.uk.com

115 Walton Street, Oxford, OX2 6AJ
207 Cowley Road, Oxford, OX4 1XF

"OUR NORTH OXFORD BRANCH IS NOW OPEN"

3030263

Cotswold Lifts Limited

Pleased to be able to offer
all lift services

New, Modernisation,
Maintenance and Repair

Telephone 0845 24 10185
contact@cotswoldlifts.co.uk
www.cotswoldlifts.co.uk

3030340



Building Services &
Sustainability Consultants

Helping to keep Oxford's architecture beautiful
and accessible for all.



Mechanical & Electrical Services
Sustainability
Design & Specification
Audits
Feasibility
Masterplanning

01865 864500

www.cbgc.com

3030408

Working **together**, working with **you**

Aebi Schmidt, helping to keep the streets of Oxford clean.
All Aebi Schmidt products now come with our **Total
Lifetime Care (TLC)**, promise. **TLC** is there to help Oxford
City Council maximise the life and value of its street cleaning
equipment giving residents complete peace of mind.

Aebi Schmidt UK Ltd
01733 363393 | uk-sales@aebi-schmidt.com
www.aebi-schmidt.co.uk

AEBI

SCHMIDT

AEBI AEBI SCHMIDT



3030511



THE *f*ORCE IN YOUR *f*IELD

**TURNERY-GROUNDFORCE ARE
PLEASED TO SUPPLY
OXFORD CITY COUNCIL
WITH PROFESSIONAL GRASS
CUTTING EQUIPMENT**

Weston on the Green, Bicester, Oxon OX25 3TJ
Tel: 01869 343292 www.turneygroup.com



3030520



Barton, Oxford: Master plan

© Crown copyright and database rights 2012
Ordnance Survey AL100017826 & 100019980

© Terence O'Rourke Ltd

Terence O'Rourke

Planning | Design | Environment

Offices in London and Bournemouth

Telephone 020 3664 6755
enquiries@torltd.co.uk
www.torltd.co.uk

3030796

Kompan Ltd

Playground Equipment

21 Roebuck Way, Knowl Hill, Milton Keynes MK5 8HL

Tel: 01908 201002

3030519



Inspiring outdoor recreation for all

Tel - 01258 817981 Email - sales@hags.co.uk Web - www.hags.co.uk

HAGS

Inspiring all generations

3030480

Working in Partnership Keeping Oxford Safe



Chaired by Oxford City Council, Oxford's Community Safety Partnership brings together organisations across the city to tackle our crime and anti-social behaviour priorities



Examples of our work includes from left to right:

- Launch of our campaign to increase domestic abuse reporting
- Problem solving community priorities through our Neighbourhood Policing programme
- Accreditation of our Community Response Team by the Chief Constable, Sara Thornton, giving the team a wider range of powers to tackle low level crime and anti-social behaviour
- Support witnesses who stand up against people that cause anti-social behaviour
- Provide holiday activities for young people during the school holidays

For more information, log on to www.saferoxford.org.uk

3030713



CLC
CONTRACTORS LIMITED

Property & Asset Maintenance
Complete Building Solutions

CLC Contractors Limited is one of the leading Property and Asset Maintenance companies in the UK.

Tel: +44 (0)23 8070 1111
E-mail: sales@clcgroup.com
Web: www.clcgroup.com

Branches Nationwide

© CLC Group 2012

3030649

KANA.LAGAN
Customer Service Solutions
for the Public Sector

250 Government Customers Worldwide
Serving the everyday needs of over 80
million citizens

Lagan Case Management
Lagan Web Self Service
Lagan Knowledge
Lagan Mobile
Lagan Social Media
Lagan Open 311

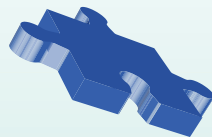
www.kana.com

3030663

Champion Recruitment supplies temporary, permanent and contract staff to a range of sectors, through nine specialist divisions covering:

**OFFICE/ADMINISTRATION • ACCOUNTANCY • HR • CATERING • INDUSTRIAL
TECHNICAL • I.T. • DRIVERS • SALES & MARKETING**

For further details on the services we provide, contact us now at one of our four branches:



Oxford
Banbury
Abingdon
Witney

01865 264050
01295 224224
01235 844001
01993 892500

oxford@champion.co.uk
banbury@champion.co.uk
abingdon@champion.co.uk
witney@champion.co.uk

WWW.CHAMPION.CO.UK

3030568

GD CONSTRUCTION
BUILDING CONTRACTORS &
REFURBISHMENT SPECIALISTS

G D Construction (St. Albans) Limited

MCA House, 2 Cambridge Road,
St. Albans, Hertfordshire, AL1 5LJ

Telephone: 01727 811442

Fax: 01727 837770

E-mail: info@gdconstruct.com

Web: www.gd-construction.co.uk



3030405

EAGLE VENDING SERVICES & FAIRTRADE VENDING

Eagle vending are an innovative forward thinking company, bringing new vending and beverage concepts into the vending market.

FAIRTRADE

Eagle/Fairtrade Vending was the pioneer of Fairtrade within the vending industry and was the first company to introduce Fairtrade branded beverage machines to the market.

HEALTHY VENDING for the Education sector.

Eagle vending again was a pioneer in introducing healthy vending into secondary schools (prior to Jamie Oliver!). Working with the Health Education Trust and product manufacturers, we introduced a wide range of healthy snacks & drinks that complied with the government's nutritional standards, and followed the School Food Trust's changing guidelines.

For further information on any of our products and services please contact
Mike Steel on 01634 722999
Mobile 07949 135999
Email: mike@eaglevending.co.uk
www.fairtradevending.co.uk



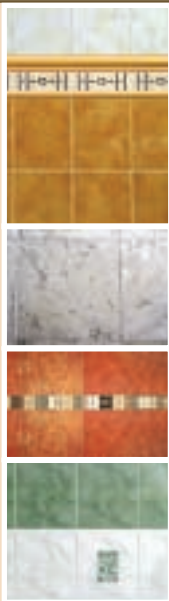
3030662

Capitol Tile Group

We are proud to have had a long association with Oxford Council and we supply them with Ceramic Wall and Floor tiles, adhesives, grouts, screeds and resilient flooring.

**PO Box 80, Eagle House,
Eagle Street,
Coventry CV1 2RJ**

Tel: 02476 633336



3030303





We help your business improve through training

Eliesha is a nationwide learning and development provider with extensive experience of developing and delivering innovative training solutions to staff at all levels. Our expertise includes accredited and non accredited management and leadership programmes, personal development, Equality and Diversity, Health and Safety, Project and Programme Management, and Performance and Change Management.

'Proud to be working in partnership with Oxford City Council'

For further information about our learning and development solutions please contact us on **0191 2822800** or email us at business@eliesha.com

Full details of our capabilities and experience are detailed at www.eliesha.com

3030264

Oxford to London

INFO 01865 772250 www.oxfordtube.com

All Oxford Tube Coaches have an allocated space for wheelchair users, with fully trained drivers. There's no need to book, just turn up and pay the driver.

all day, every day & through the night

**Oxford
tube**

3030297

**GREAT VALUE
GREAT SAVINGS
EVERYDAY**

2010 Ford Transit 350 Jumbo

- One Owner • Ply Lined • White
- Full Steel Bulk Head • 6 Speed Manual Box
- 44000 miles



ONLY
£10995

2009 VW Caddy Maxi C20 TDi 104 1.8

- Therm Side Doors • Ply Lined
- Steel Bulk Head
- 30000 miles



ONLY
£7995

2010 Vauxhall Combo 1.3 CDTi

- Side Sliding Door • Ply Lined
- One Owner
- Steel & Metal Bulk Head
- 43000 miles



ONLY
£5995

2010 Ford Transit SWB Low Roof 110 FWD 280S

- Side Door • Ply Lined
- One Owner • 54000 miles



ONLY
£7995

2012 Ford Transit Crew Cab 350 Tipper

- White • One owner
- 6000 miles



ONLY
£17650

2008 Ford Transit Van T350 115 MWB

- Ply Lined • Electric Windows
- Steel Bulk Head • Radio/CD • ESP
- 8 Speed manual 66534 miles



ONLY
£7495

2010 Renault Kangoo Maxi LL Plus 105

- Air Conditioning • Electric Windows
- Bluetooth Sat Nav • Cruise Control
- 61880 miles



ONLY
£6595

2010 Renault Kangoo ML20 Plus 105

- Air Conditioning • Electric Windows
- Bluetooth Sat Nav • Cruise Control
- Tested May 2013



ONLY
£4595

2010 Renault Trafic SWB LR 115

- Air Conditioning • Electric Windows
- Electric Mirror Sat Nav • Vauxhall Roof Rack & Ladder



ONLY
£8995

Can't see what your looking for? We have hundreds of commercial vehicles in stock - Call for details



Hartwell Commercial Vehicles

Oxford Motor Park, Kidlington OX5 1RY
01865 370600

www.hartwell.co.uk

Business rates only. Motures subject to VAT



Tennant preferred supplier to Oxford City Council



- Fast transit speed, which will increase productivity
- A real & useable 1m³ hopper capacity allowing greater productivity
- A reliable, proven history at Oxford City Council
- Years of driver experience using the 636
- Existing experience with workshop engineers at Oxford City Council
- Tennant carried out a comprehensive training programme for all operators in Oxford, resulting in a good understanding and strong relationship with the management and operators



Tennant has once again become the preferred supplier to Oxford Council for its 636HS range of sweepers.

For further information contact Leigh Bottel on 07714 229856 or visit www.tennant.co.uk.

Soft Surfaces



SPORTS AND SAFETY SURFACES

01625 445760

info@softsurfaces.co.uk



Established in 1997, Soft Surfaces Ltd is now a leading contractor in the Sports and Safety Surfacing sector. We are an approved contractor for Oxford City Council and have a framework contract in place, which gives you peace of mind that we have been thoroughly vetted. We are happy to discuss any of your playground & sports requirements including play area renovation works.



PLAY SURFACING

We offer a full range of impact absorbing safety surfaces including:

- Wet Pour Safer Surfacing
- Rhino Mulch – Premium Bonded Rubber
- Grass Protection Mats
- Play Sand – Bulk Loads
- Play Bark – Bulk Loads
- Playground De-Icer
- Surface Cleaning



SPORTS PITCHES

Our Sports division can offer full sports pitch construction, which can include:

- 3G, 3rd Generation Artificial Turf
- Polymeric Multi Use Games Areas (MUGA)
- Synthetic Surface Sports Pitches
- Floodlighting • Fencing • Macadam
- Long Jump Run Ups / Construction



SPORTS MAINTENANCE

Contact us if you have an existing Sports facility as we also offer:

- Maintenance packages
- Repairs
- Pitch Rejuvenation of Synthetic Turf - We remove, de-compact the lower infill and replace contaminated sand with new, extending the surface life, improving drainage and playing characteristics.
- Running Track Cleaning; Pitch Resurfacing

www.softsurfaces.co.uk

www.sportsandsafetysurfaces.co.uk